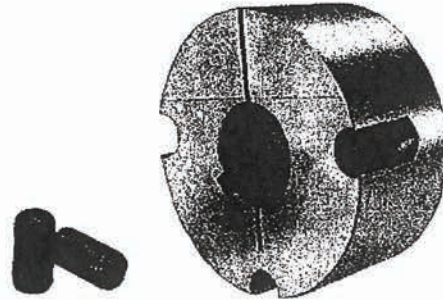
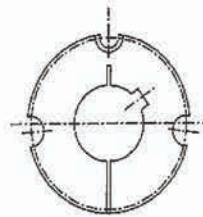
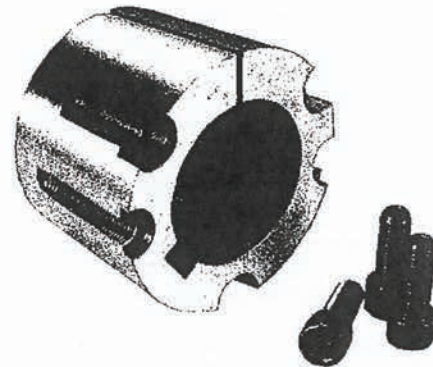
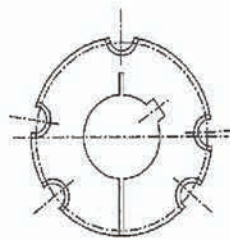
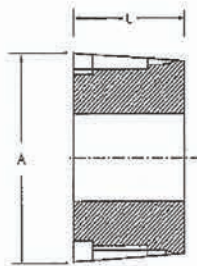


## Taperlock Bushes

Taperlock bushes are designed to facilitate easy change bush system that can be used in sprockets, weld-on-hubs, pulley etc. We stock a wide range of bore sizes to fit both metric and imperial standard shafts.



TYPE A  
1008 through to 3030



TYPE B  
3535 through to 5050

Bush	Maximum Bore		A		L mm	No. of Screws	Screw Size	Screw Type	Type
	mm	inch	mm	inch					
1008	25	1"	35.3	1.390	22.2	2	1/4BSW x 1/2	Grub	A
1108	28	1.1/8"	38.5	1.516	22.2	2	1/4BSW x 1/2	Grub	A
1210	32	1.1/4"	47.6	1.7/8"	25.4	2	3/8BSW x 5/8	Grub	A
1215	32	1.1/4"	47.6	1.7/8"	38.1	2	3/8BSW x 5/8	Grub	A
1310	35	1.318"	50.8	2"	25.4	2	3/8BSW x 5/8	Grub	A
1610	42	1.5/8"	57.1	2.1/4"	25.4	2	3/8BSW x 5/8	Grub	A
1615	42	1.5/8"	57.1	2.1/4"	38.1	2	3/8BSW x 5/8	Grub	A
2012	50	2"	69.9	2.3/4"	31.8	2	7/16BSV x 7/8	Grub	A
2017	50	2"	69.9	2.3/4"	44.5	2	7/16BSV x 7/8	Grub	A
2517	65	2.1/2"	92.5	3.1/4"	44.5	2	1/2BSV x 1	Grub	A
2525	65	2.1/2"	92.5	3.1/4"	63.5	2	1/2BSV x 1	Grub	A
3020	75	3"	108.0	4.1/4"	50.8	2	5/8BSW x 1.1/4	Grub	A
3030	75	3"	108.0	4.1/4"	76.2	2	5/8BSW x 1.1/4	Grub	A
3525	90	3.1/2"	127.0	5"	63.5	3	1/2BSW x 1.1/2	SHCS	B
3535	90	3.1/2"	127.0	5"	88.9	3	1/2BSV x 1.1/2	SHCS	B
4040	100	4"	146.0	5.3/4"	101.6	3	5/8BSW x 1.3/4	SHCS	B
4545	115	4.1/2"	161.9	6.3/8"	114.3	3	3/4BSV x 2	SHCS	B
5050	125	5"	177.8	7"	127.0	3	7/8BSW x 2.1/4	SHCS	B